

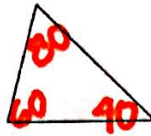
Unit 5 → Lesson 3 → Right Triangles and Their Parts **TEACHER KEY**

I. Classifying Triangles by their angles

a. Acute Triangle

- i. An acute triangle is a triangle that has THREE acute angles

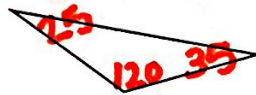
$$x < 90$$



b. Obtuse Triangle

- i. An obtuse triangle is a triangle that has at least ONE obtuse angle

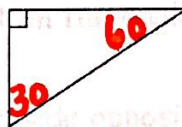
$$90 < x < 180$$



c. Right Triangle

- i. A right triangle is a triangle that has at least ONE right angle

$$x = 90$$



d. Oblique Triangle

- i. An oblique triangle is a non-right triangle
 ii. These can be acute triangles or obtuse triangles

e. Equiangular Triangle

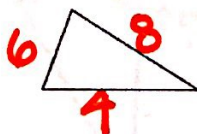
- i. An equiangular triangle is a triangle that has three congruent angles



II. Classifying Triangles by their sides

d. Scalene Triangle

- i. A scalene triangle is a triangle that has no congruent sides



$$6 + 4 > 8$$

$$10 > 8 \text{ yes!}$$